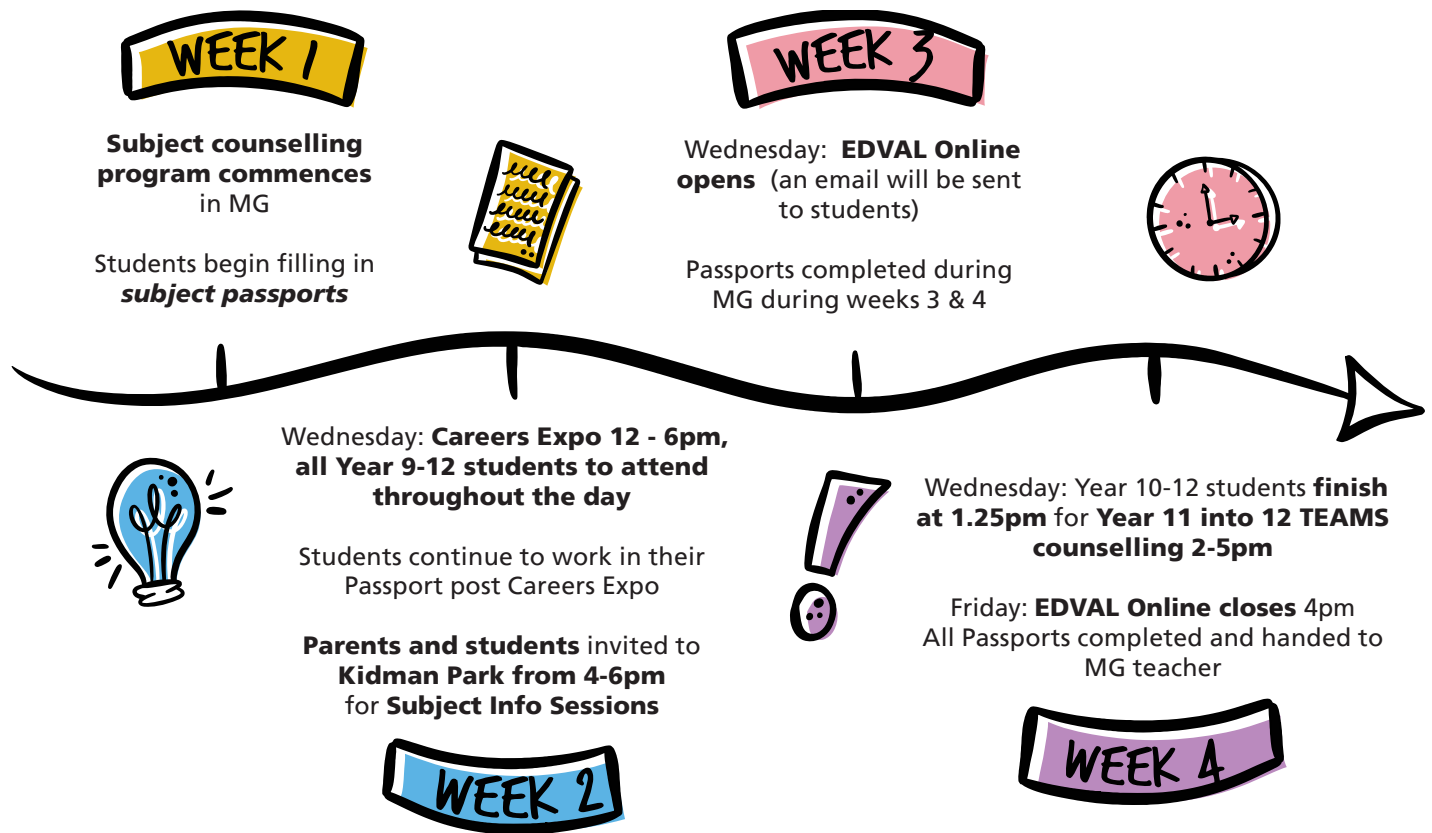




# Future Pathways

Your guide to **subject and pathways selection** planning

# SUBJECT & PATHWAYS SELECTION TIMELINE



# SUBJECT & PATHWAYS SELECTION PROCESS

## Acceptance into courses:

- To move from Year 9 to 10, Year 10 to Stage 1 and from Stage 1 to Stage 2, specific subject recommendations exist
- Access to courses is determined by past performance based on semester results and examination results not by perceived or implied potential.
- A place in a subject is earned by demonstrating the necessary background that includes:
  - Academic achievement, i.e. required levels of performance in current studies
  - Organisational skills (planning, completion of work, submission of work by the due date)
  - Fulfilment of expectations (application, attendance, punctuality, homework)
- Overall standard of work will be taken into account in the subject selection and subject approval process.
- Access to VET courses is dependent on a range of factors, including but not limited to availability, delivery site and fees.

# TIPS FOR SUCCESS

Choose senior subjects and courses carefully as decisions may affect your success at school, your feelings about school and your level of preparedness or eligibility for training or tertiary study after school.

## **Before you select the course and subjects that you wish to choose:**

- Understand the content and requirements and read subject descriptions in this Curriculum Handbook carefully
- Talk to your subject teachers, curriculum leaders and VET and Careers Counsellor
- Consider your results, career goals and interests and determine your academic and vocational strengths

## **Do NOT choose a subject or course:**

- Because your friends are doing that subject or course
- On the basis of a teacher's reputation
- Because you think it might be easy

## **When planning your Tertiary Pathway, check:**

- Prerequisites, assumed knowledge, precluded subjects pairs and preferred subjects for University Entry. Noting entry requirements vary between institutions (see the SATAC Tertiary Entrance Booklet)
- TAFE preferred pathways, subject and employment experience/s & industry demands.

# VET AT NAZARETH

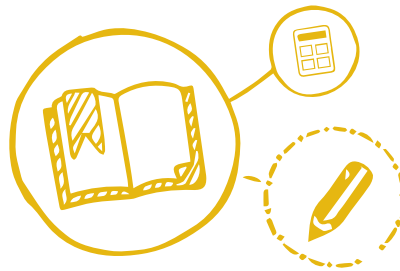
VET stands for Vocational Education and Training and is formal training designed to give students skills for work, particularly in industry and trade professions. There are many opportunities for Nazareth students to participate in VET.

VET options are recognised towards the SACE, and this supports students to make significant progress towards completing VET qualifications at the same time as completing their SACE. Some completed VET certificates may help for some University or TAFE entry.

Nazareth students can access a range of VET courses across a variety of different industry areas. Nazareth works with a number of different training providers so students can pursue their individual pathway and interests.



# CURRICULUM HANDBOOKS



## MG COUNSELLING PROGRAM

- Students are involved in a subject counselling program.
- Students undergo a series of activities during MG classes to assist them with their subject selection.
- The MG teacher offers individualised counselling and support.
- Students also have the opportunity for further counselling during lunchtimes in weeks 3 and 4.



# SUBJECT SELECTION PASSPORT

- It is like a rough copy for your selections, use it to guide research
- Must complete all sections before you start your EDVAL online form
- Must complete the Pathways interest section.
- Must have all recommendations completed.
- Must be signed by your parents
- Must be submitted to your MG teacher with your EDVAL form



## YEAR 10 PATHWAY OPPORTUNITIES

- Try A Trade
- Work experience
- Industry Immersion activities
- Career Expo and University Enrichment events

## YEAR 11 & 12 VET OPPORTUNITIES

- Vocational Education & Training
- Practical skills for work and industry
- Pathways to apprenticeships as well as para-professional careers
- VET counts towards the SACE
- A fully completed Cert III counts towards the ATAR

## 2025 VET COURSES AT NAZARETH

- Cert III in Business
- Cert III in Health Services Assistance
- Cert III in Early Childhood Education & Care
- Cert III in Fitness
- Cert II in Cookery & Cert III in Hospitality
- Cert III in Music
- Cert III in Dance

A range of other courses are also available at other training providers.

# CAREERS EXPO

**Wednesday 31 July** | 12.00 - 6.00 pm

**Kidman Park Campus** | 344 Findon Road, Kidman Park

Don't miss the Careers Expo, where you can explore a wide range of career options and gain valuable insights before attending the Pathway, Subject and SACE information sessions.

Parents are invited to attend the expo between 4-6pm.

## SUBJECT & PATHWAYS SELECTION SESSIONS

The Subject and Pathways selection information video contains important information on;

- The SACE
- Pathways and Partnerships
- Subject Selection and Subject counselling
- How we support each young person in this process?



We then warmly invite all parents/caregivers to attend one of the below listed Q & A sessions, where you will hear from key staff to have all your Subject & Pathways questions answered.

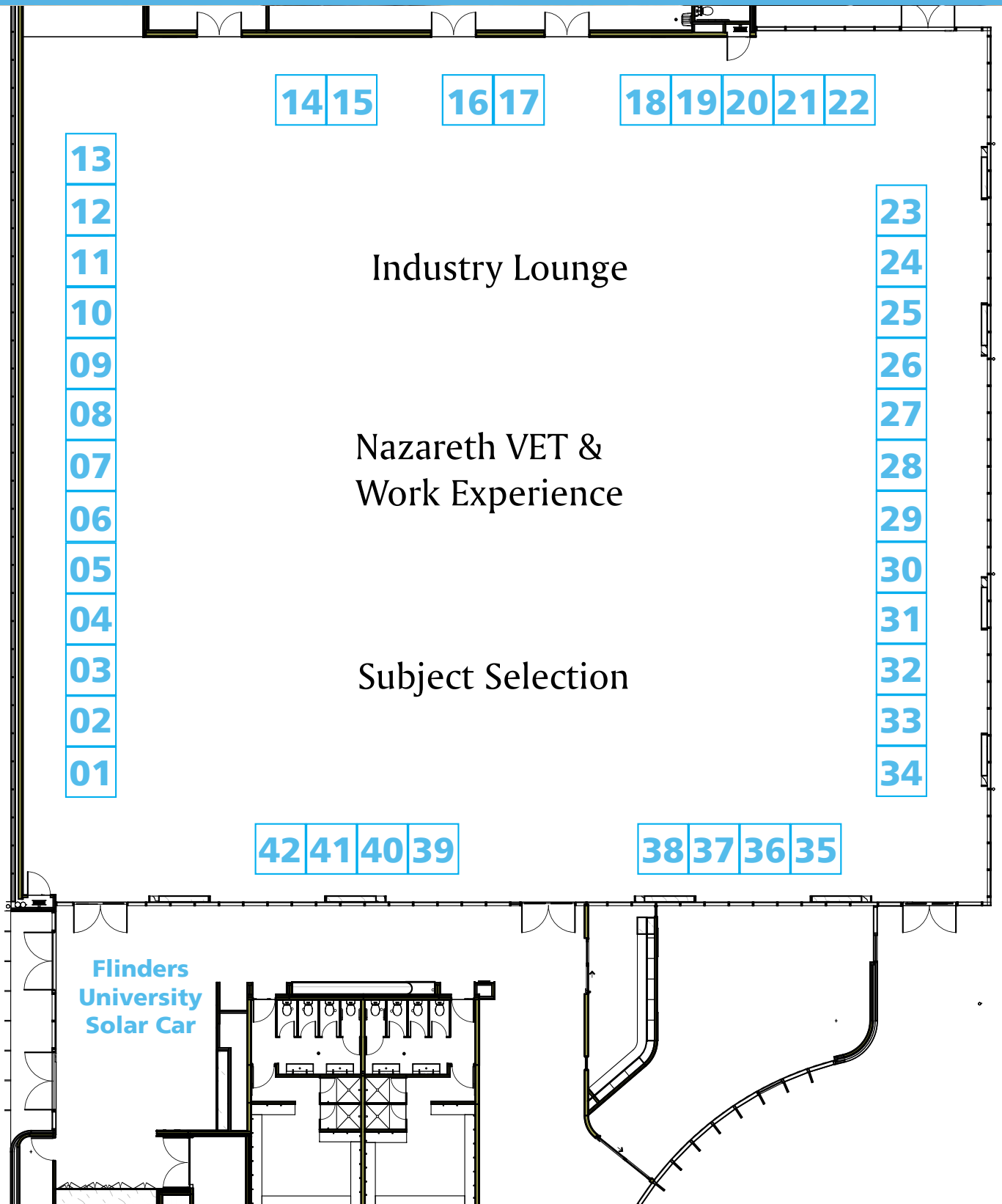
**Wednesday 31 July**  
**Kidman Park Campus, Performing Arts Space**

3 x Q & A sessions will run during the Career Expo at:

- 4:00pm
- 4:45pm
- 5:30pm



# Kidman Park - Gymnasium



# CAREERS EXPO

No.	Exhibitors	
20	<b>Adelaide Institute of Business and Technology</b>	AIBT Offers Courses in Business, IT, TESOL and EAP such as Certificate IV in Business, Diploma of Business, Advanced Diploma of Business.
3	<b>Academy of Interactive Entertainment (AIE)</b>	A non-profit specialist games and visual effects educator, offering courses in Game Design, Game Art, Game Programming, 3D Animation, VFX for Film, and more.
23	<b>AIOH Adelaide Institute of Hospitality</b>	Provider of education and apprenticeships in food and hospitality - offering engaging courses, hands-on learning and real-world industry experience.
18	<b>Apprenticeship Careers Australia</b>	Australia's leading employer of apprenticeships and traineeships, for roles in care, trades and infrastructure. Matching local businesses with great staff.
19	<b>Australian Air Force Cadets 620 Squadron Pt Adelaide</b>	An aviation focused youth organisation that is administered and actively supported by the Royal Australian Air Force, enrolling between 13 & 18 years.
10	<b>Australian Chiropractor College</b>	Providing South Australia's first and only Bachelor of Chiropractic degree accredited by the Tertiary Education and Quality Standards Agency of Australia (TEQSA).
41	<b>Australian Meat Industry Council</b>	AMIC is the peak body representing retailers, processors and smallgoods manufacturers across the country.
11	<b>Australian Nursing &amp; Midwifery Federation</b>	Representing over 321,000 nurses, midwives and carers across the country, the Federation is Australia's largest union and professional nursing and midwifery organisation.
36	<b>BAE Systems</b>	BAE Systems provide some of the world's most advanced, technology-led defence, aerospace and security solutions, developing, engineering, manufacturing, and supporting products and systems to deliver military capability, protect national security and people, and keep critical information and infrastructure secure.
27	<b>Baptcare</b>	Baptcare is a faith-based not-for-profit organisation that provides residential and community care for older people, support to children, families and people living with a disability, financially disadvantaged people and people seeking asylum.
33	<b>Brentnalls Accountants</b>	Brentnalls SA is a chartered accountant and business advisory firm, providing services to meet your financial and tax needs. Brentnalls offer a Junior Accountant Undergraduate Program for current Year 12 or University students embarking on a career in commerce, accounting, finance, economics or a business related degree. Several Nazareth graduates have undertaken this program.
39	<b>Celtic Training</b>	Empowering students with vital skills and practical experience, Celtic Training is an education provider offering a wide range of courses in various fields, including Health, Community, and Business Services.
15	<b>Civil Train</b>	As an industry association for civil construction Civil Train engage with members to learn of emerging technologies and trends. Utilising this knowledge to continue to adapt and deliver high quality, job specific training to our industry, focused on competency and safety.
32	<b>Community Bank</b>	Community Bank provides award-winning financial products and services, and is committed to returning profits to local communities.
35	<b>Community Bridging Services</b>	Community Bridging Services (CBS) Inc. is a not for profit created to support people with disability develop into their area of interest.



No.	Exhibitors	
31	<b>DBH Lawyers</b>	DBH is a widely respected law firm committed to achieving successful outcomes for its clients.
17	<b>Defence Force Recruiting</b>	Australian Defence Force Recruiting (ADF Recruiting) is responsible for attracting and enlisting candidates into the Australian Army, Navy, and Air Force. It provides information, guidance, and support throughout the recruitment process to ensure the selection of capable individuals who meet the ADF's standards and requirements.
6	<b>FedEx Express</b>	FedEx Express is a global courier delivery services company known for its fast and reliable express transportation solutions.
2	<b>Port Adelaide Institute of Sport</b>	This partnership between the Port Adelaide Football Club and Flinders University provides an education pathway in South Australia giving students access to AFL industry experience and elite performance facilities for careers in sports management.
1	<b>Flinders University</b>	Flinders is a leading international university in Australia with a record of excellence and innovation in teaching.
29	<b>HIA ( Housing Industry Association)</b>	HIA is the peak national industry association for residential building in Australia.
30	<b>International College of Hotel Management</b>	ICHM is a premier institution offering specialised education and training in hotel management and hospitality. It combines academic excellence with practical industry experience to prepare students for global careers in the hospitality sector.
8	<b>Master Plumbers</b>	The Master Plumbers group training organisation employs apprentice plumbers and places them with plumbing employers for on-the-job experience.
4	<b>Maxima</b>	Maxima is an Australian organisation that provides employment, training, and support services to help students and job seekers find meaningful work. It offers tailored programs, including apprenticeships and traineeships, to enhance skills and career prospects.
25	<b>Minda</b>	Minda is the largest not-for-profit disability service provider and employer in SA, providing advocacy, support and services to enable people living with an intellectual disability to live their best lives.
9	<b>Motor Trade Association</b>	As South Australia's only dedicated automotive industry training provider, the MTA gives apprentices the skills, training and industry access to prepare for an automotive career.
28	<b>PEER</b>	PEER is the centre for apprenticeships, traineeships and trade skills training. As a GTO, they are one of the largest employers of apprentices within the Building and Construction industry in SA, offering employment and training in electrical, plumbing, refrigeration and data communication apprenticeships. As an RTO, they also deliver pre-vocational training, VET in Schools training programs, apprenticeship and traineeship training, upskilling short courses and skills recognition training.
5	<b>Queensford College</b>	Queensford College offers Nationally Recognised Qualifications from various study areas from Certificate II to Graduate Diploma Levels.
21	<b>Rising Sun Pictures</b>	An award-winning visual effects studio based in Adelaide, Rising Sun create mind-blowing special effects for blockbuster movies, bringing fantastical worlds and epic scenes to life on the big screen.

# CAREERS EXPO

No.	Exhibitors	
13	<b>South Australian Institute of Business &amp; Technology</b>	As a pathway provider to UniSA, SAIBT provides Diploma programs in the areas of Business, Arts, IT, Engineering and Health Sciences.
16	<b>Status Training and Recruitment</b>	Status is an independent specialist provider of recruitment, training and government employment services.
7	<b>Svitzer</b>	Svitzer is a global towage and marine services provider, renowned for its expertise in assisting ships in ports and at sea. They offer exciting career opportunities in maritime operations, providing essential services that keep global trade moving smoothly.
26	<b>Surf Life Saving SA</b>	Surf Life Saving SA (SLSSA) is South Australia's major coastal water safety, drowning prevention and rescue authority.
24	<b>Tabor College</b>	Tabor College is an Australian Christian tertiary college offering a range of liberal arts courses from certificate to post-graduate studies in the areas of counselling, education, ministry, performing arts, mission, youth studies and humanities.
40	<b>TAPS</b>	SA's largest Group Training Organisation specialising in plumbing and construction careers, offering paid work while learning the trade.
37	<b>TAFE SA</b>	TAFE SA is South Australia's largest vocational education and training provider, offering a wide range of industry-focused courses and qualifications to equip students with the skills needed for their careers.
14	<b>Torrens2Darlington Tunnel project</b>	Interested in civil engineering, urban planning, or large-scale infrastructure projects? The Torrens2Darlington Tunnel project is a major infrastructure initiative in South Australia, aimed at improving transport efficiency and connectivity.
12	<b>The French Beauty Academy</b>	Australia's leading provider of nationally accredited beauty courses, offering flexible learning options.
34	<b>The University of Adelaide</b>	The University of Adelaide is a prestigious tertiary institution renowned for its academic excellence and innovative research across various fields.
22	<b>University of South Australia</b>	UniSA is a leading tertiary institution known for its practical, industry-relevant education and research.
38	<b>Western Technical College</b>	Supporting students from schools across SA, to pursue trade pathways into high demand jobs.
42	<b>Woolworths</b>	One of Australia's largest supermarket chains, providing diverse employment opportunities across retail, distribution, and corporate roles, with a focus on customer service, teamwork, and career development.

# EDVAL ONLINE SUBJECT & PATHWAYS SELECTION FORM

- An EDVAL link will be emailed to **students** for electronic submission of subject selections.
- Further instructions on how to complete the EDVAL online process will be provided in this email, with an individual 2025 access code.
- Please note: **students** will receive the individualised email from EDVAL (it is not sent to parents / caregivers).
- Electronic submissions are OPEN: **From Wednesday 7 August** and CLOSE: **Friday 16 August at 4pm**



## RE-COUNSELLING

- All Year 10 and 11 students will have the opportunity to have a counselling meeting with their MG teacher to discuss the subjects the students have chosen.
- **Year 10-12 students are dismissed at 1:25pm on Wednesday 14 August** for Year 11 into 12 phone counselling between 2-5pm

## KEY LINKS

### Nazareth Website Links

[www.nazareth.org.au/curriculum-handbooks](http://www.nazareth.org.au/curriculum-handbooks)

[www.nazareth.org.au/learning-care/student-pathways/](http://www.nazareth.org.au/learning-care/student-pathways/)

[www.nazareth.org.au/learning-care/student-pathways/vet](http://www.nazareth.org.au/learning-care/student-pathways/vet)

[www.nazareth.org.au/learning-care/student-pathways/work-experience](http://www.nazareth.org.au/learning-care/student-pathways/work-experience)

[www.nazarethcatholiccollegecareers.com](http://www.nazarethcatholiccollegecareers.com) (Careers Portal)

### Other Useful Links

[www.sace.sa.edu.au/coordinating/marketing-toolkit](http://www.sace.sa.edu.au/coordinating/marketing-toolkit)

[www.sace.sa.edu.au/studying/your-sace/what-is-the-sace](http://www.sace.sa.edu.au/studying/your-sace/what-is-the-sace)

[www.satac.edu.au](http://www.satac.edu.au)

[www.tafesa.edu.au/about-tafesa/publications](http://www.tafesa.edu.au/about-tafesa/publications)





**Nazareth**

Campuses at Findon, Flinders Park  
and Kidman Park

[www.nazareth.org.au](http://www.nazareth.org.au)